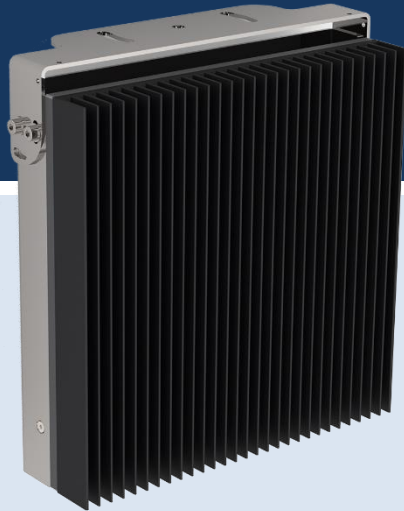


Operators Manual



BR 20AR

Ambient temperature reference source

Optris GmbH

Ferdinand-Buisson-Str. 14
13127 Berlin
Germany

Tel.: +49 30 500 197-0

Fax: +49 30 500 197-10

E-mail: info@optris.global

Internet: www.optris.global



Table of contents

Table of contents	3
1 General notes	5
1.1 Intended use	5
1.2 Warranty	6
1.3 Scope of supply	6
2 Technical Data	7
2.1 BR 20AR	7
3 Installation	10
3.1 Hardware installation	10
3.2 Configuration	12
3.3 Accessories.....	17

4	Fever Detection	18
4.1	Crowd based screening	18
4.2	Individual screening	18
4.3	Absolute temperature measurement accuracy.....	19
4.4	Deployment of an IR camera for best results	20
4.5	Influences on external skin temperatures	21

1 General notes

1.1 Intended use

Thank you for choosing the **optris® BR 20AR** reference source.

The BR 20AR is a rugged reference source and ideally suited for referencing thermal imaging cameras. It contains two main components:

- Radiation surface
- Temperature probe (16-bit digital temperature sensor with 0.1 °C accuracy)

The radiation surface is made of aluminium with a special thermal conductivity and has shaped grooves. The BR20 AR is floating with the ambient temperature. The temperature is measured with a higher precision temperature probe.



To avoid a damage of the special coating, please do not touch the radiation surface with sharp or spiky objects.



Read the manual carefully before the initial start-up. The producer reserves the right to change the herein described specifications in case of technical advance of the product.

1.2 Warranty

Each single product passes through a quality process. Nevertheless, if failures occur please contact the customer service at once. The warranty period covers 24 months starting on the delivery date. After the warranty is expired the manufacturer guarantees additional 6 months warranty for all repaired or substituted product components. Warranty does not apply to damages, which result from misuse or neglect. The warranty also expires if you open the product. The manufacturer is not liable for consequential damage or in case of a non-intended use of the product.

If a failure occurs during the warranty period the product will be replaced, calibrated or repaired without further charges. The freight costs will be paid by the sender. The manufacturer reserves the right to exchange components of the product instead of repairing it. If the failure results from misuse or neglect the user has to pay for the repair. In that case you may ask for a cost estimate beforehand.

1.3 Scope of supply

- BR 20AR radiator
- Mounting bracket
- 20 m cable with PIF connector
- Operators manual

2 Technical Data

2.1 BR 20AR

Dedicated temperature range	18 °C – 33 °C
Emissivity	0,95 ± 0,02 (for 8-14 µm)
Temperature probe (integrated)	Digital 16-bit temperature sensor
Accuracy of temperature probe	± 0.1 °C (25...50 °C), drift: 0,0073 °C
Accuracy of PI 450i with BR 20AR (T _{Amb} 18 °C...33 °C)	± 0.5 °C (T _{Obj} 30...40 °C)
Interface	5-pin connector fitting to PIF connector of PI 450i cameras
Dimensions	20 cm x 20 cm x 5,8 cm
Weight (with mounting bracket/ without cable)	2,5 kg
Material	Radiation surface: anodized aluminium Back: stainless steel

Table 1: Technical Data of BR 20AR

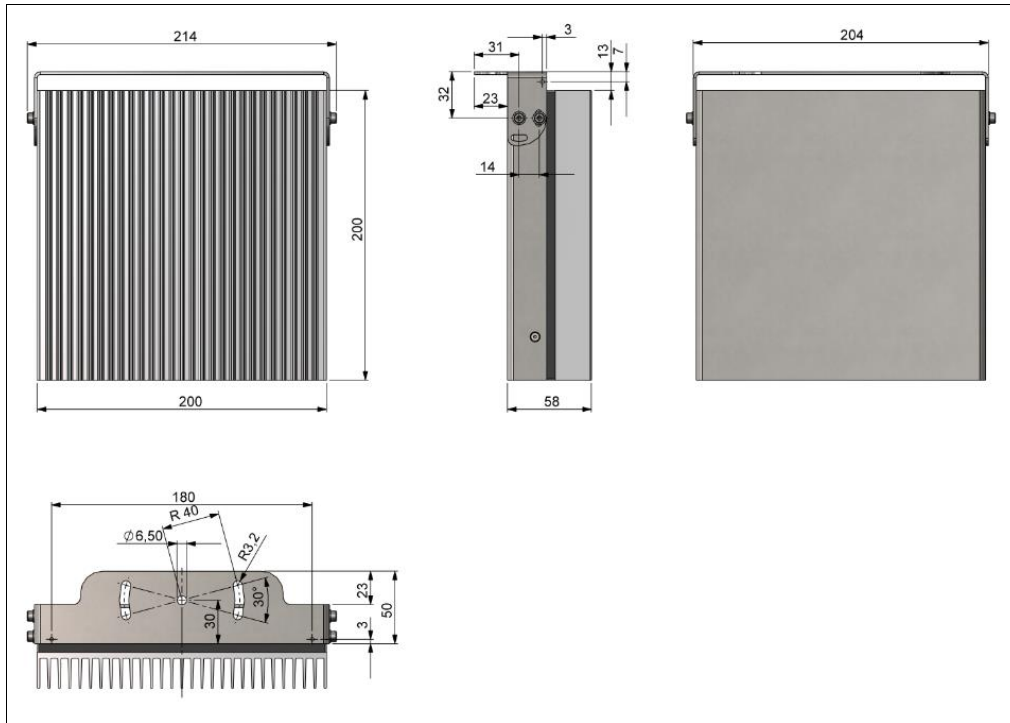


Figure 1: Dimensions [mm], ceiling mounting

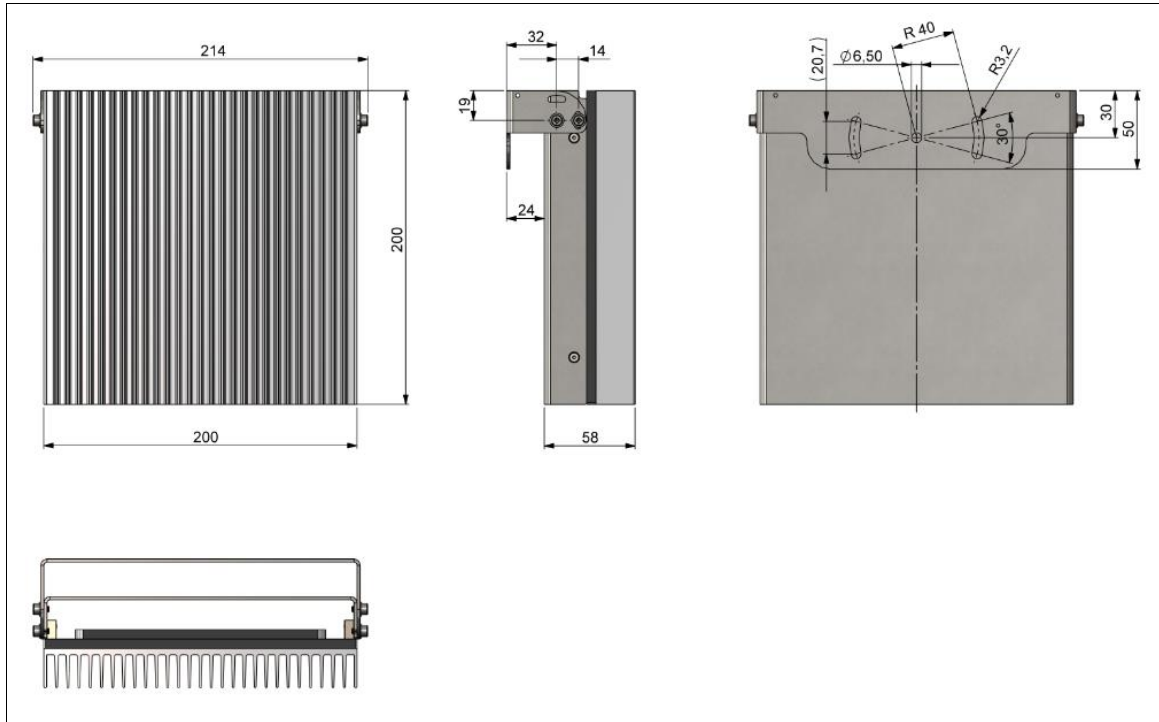


Figure 2: Dimensions [mm], wall mounting

3 Installation

3.1 Hardware installation

A possible configuration of the BR 20AR is shown in **Figure 4**. The optris PI 450i T010 camera is connected via USB to the computer. The included 20 m cable has to be connected to the PIF connector on the camera back side (see **Figure 3**). There is no power supply necessary for the BR 20AR.

Hardware and Software Recommendation:

- Computer with OS Windows 7 or higher
- Optris PI 450i T010 camera and PIX Connect Software Version 3.9.3063.0 or higher

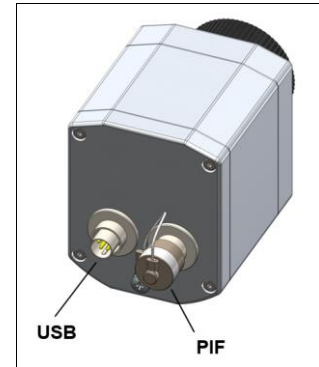


Figure 3: Connection

Note:



- The cameras must be focused
- Consider the minimum distance of the selected optics
- The reference source must not be observed by other objects

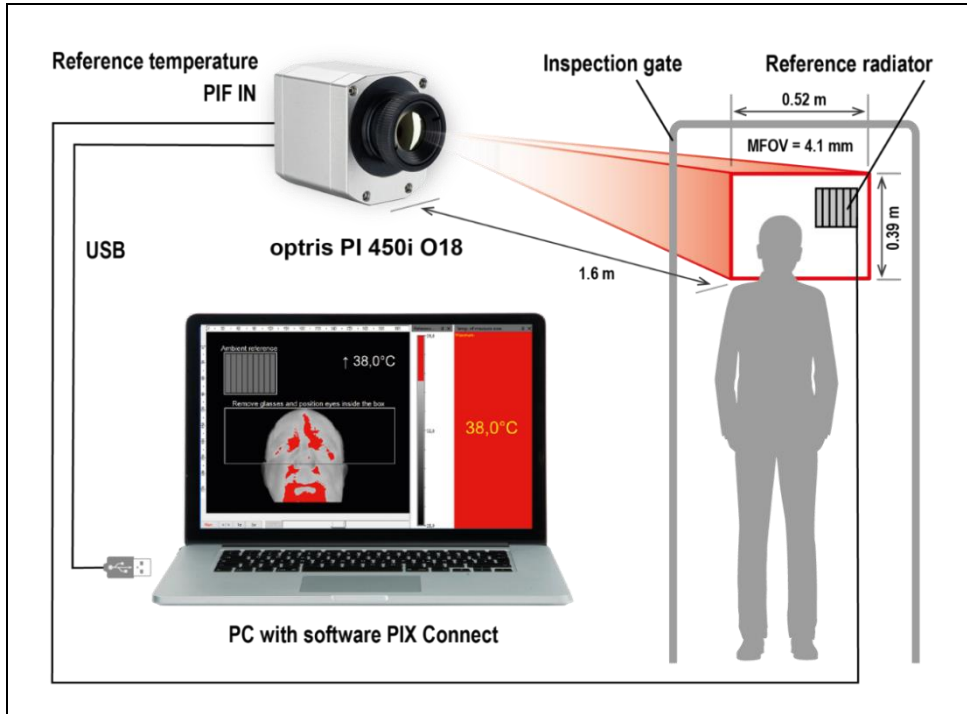


Figure 4: System overview with PI 450i camera

3.2 Configuration

After having connected your Hardware, you can start with the configuration in the PIX Connect software. To do this, go to the **Referencing** tab under **Tools** and **Configuration**. Under **Reference temperature** and **Source**, select **External probe**.

Now select under **Compare with measuring area** the measuring area that should correspond to the reference area. This measuring area must be located in the reference source. The remaining options do not require further adjustments.

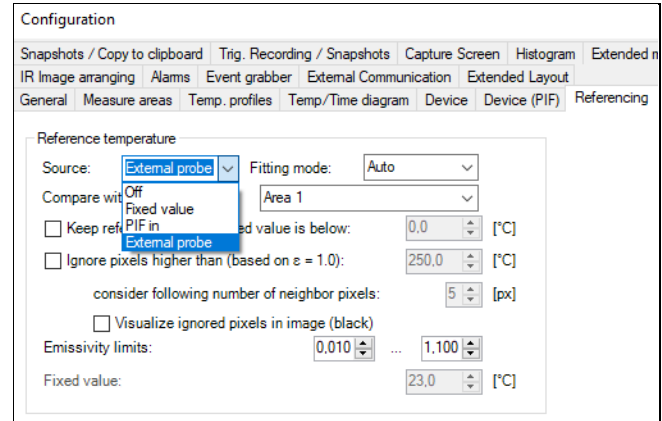


Figure 5: Configuration in PIX Connect software



The software already contains a predefined layout called "Fever Inspection with Ref". You can load this layout under Tools and Load layout and use it as a presetting.

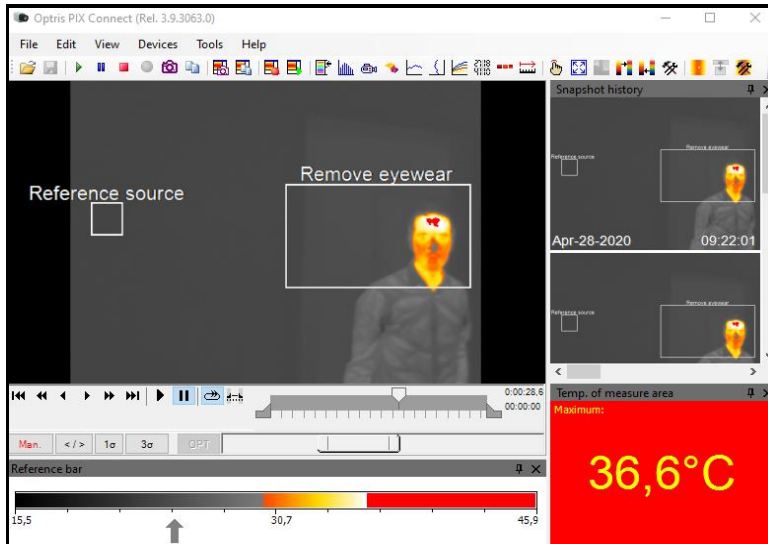


Figure 6: Example layout in PIX Connect – Fever Inspection with Ref



To make a correct temperature measurement on the human face make sure that glasses of the persons are removed and that the eyes are inside the measuring area.

The “Fever Inspection with Ref” layout consists of two measuring areas. The first measuring area is the so-called "reference source", which must be placed on the BR 20AR radiator. It is important to cover a large area as possible, but not the edges (see **Figure 7**). The second measuring area ("Remove eyewear") must be positioned in such a way that the human face is covered.

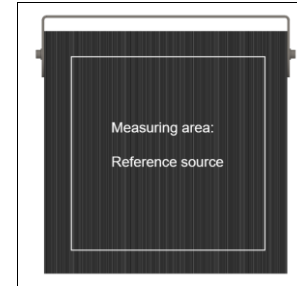


Figure 7: Position of Reference source

The window **Temp. of measure area** displays the current maximum temperature value. As soon as this reaches the alarm value, the color changes to red. This ensures that the alarm case is clearly visible. In this case the threshold value is set to 36 °C. The threshold value of the alarm must be adjusted for different conditions.

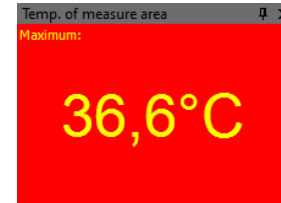


Figure 8: Temp. of easure area

In the **snapshot history**, all alarm cases are stored and can be analyzed more precisely. A snapshot is taken for each alarm condition. For this purpose, *Snapshot on alarm* selection must be activated under Alarm configuration in the Alarms tab.

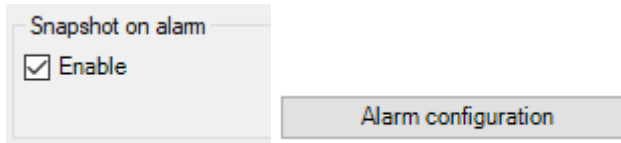


Figure 9: Configuration – Snapshot on alarm

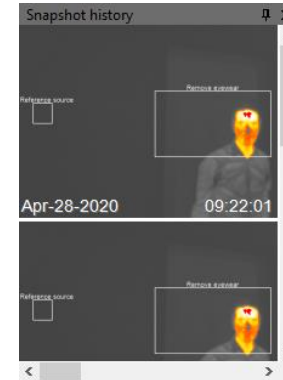


Figure 10: Snapshot history

The **reference bar** shows the scaling of temperature within the color palette. The threshold value can be changed directly here.

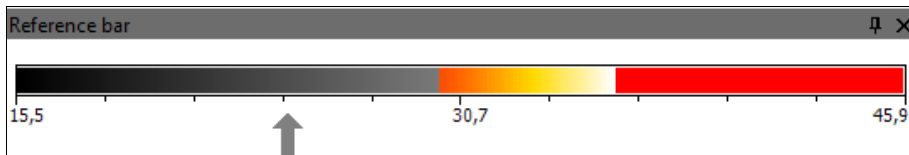
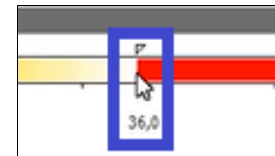


Figure 11: Reference bar



The settings for the different color palettes can be found in the configuration under the **Measuring colors** tab. Several color palettes can be defined here. In this layout the color palette *Gray* was used to achieve a good contrast to the critical areas. Between a temperature of 30-36 °C the color palette *Iron Hi* is used. This illustrates the "normal" body temperature. And all values that are higher than 36 °C are indicated by the color red. In this way, critical points can be clearly highlighted.

By activating *Bind threshold to high alarm of main measure area*, this threshold is equated with the alarm condition.

Extended measuring colors



Range	Threshold	Mode	
	High:	<input type="radio"/> Off <input checked="" type="radio"/> Color <input type="radio"/> Alt. Palette <input type="radio"/> Ext. Alt. Palette	 <input type="button" value="Color"/>
	36,0 [°C]	<input checked="" type="checkbox"/> Bind threshold to high alarm of main measure area	
	Mid:	<input type="radio"/> Off <input type="radio"/> Color <input type="radio"/> Alt. Palette <input checked="" type="radio"/> Ext. Alt. Palette	 <input type="text" value="Iron Hi"/>
	30,0 [°C]	<input type="checkbox"/> Bind threshold to low alarm of main measure area	
	Low:	<input checked="" type="radio"/> Off <input type="radio"/> Color <input type="radio"/> Alt. Palette <input type="radio"/> Ext. Alt. Palette	

Figure 12: Configuration – Measuring colors

3.3 Accessories

To be able to use the BR 20AR source and the PIF (standard or industrial PIF) with the camera simultaneously, an optional **PIF splitter** is available (**Part-No: ACPIPIFSPCB2**).

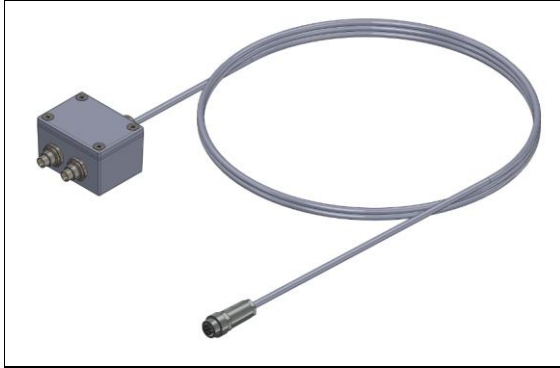


Figure 13: PIF Splitter

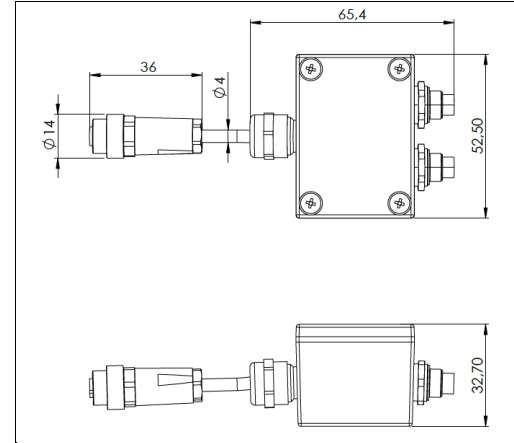


Figure 14: PIF Splitter – Dimensions [mm]



The splitter is only working for one BR 20AR and one PIF. The use of two PIFs at the same time is not possible. The connection to the splitter can be chosen freely.

4 Fever Detection

There are essentially two different methods for detecting possible persons for fever with a thermal imaging camera: **Individual screening** or **Crowd based screening**. The most suitable method depends on various factors (such as the installation location).

4.1 Crowd based screening

The IR camera is monitoring a crowd of people at once or sequential. Assuming that the majority of the measured maximum head temperature values are coming from healthy individuals the exceptions with an elevated body temperature can be easily detected.

4.2 Individual screening

This method is mainly used at control gates or where crowd screening is not possible. The Medial Canthus (tear duct) provides the strongest correlation between outside skin temperature and core body temperature and is measured more precisely from a close distance. This method is also best for detecting low grade fevers.

4.3 Absolute temperature measurement accuracy

Most IR cameras with 8-14 μm spectral response are specified with an accuracy of ± 2 °C or 2 % of reading whichever is greater based on deployments in industrial environments in a wide variety of ambient conditions from 0 °C to 50 °C.

A higher accuracy can only be achieved by using a black body reference source. The source needs to be stable, have high emissivity and positioned in the scene proximate to the subject to be scanned.

The BR 20AR ambient referencing source can be combined with the PI 450i T010 camera. The black body is equipped with a 16 bit digital temperature sensor with ± 0.1 °C accuracy. By integrating this highly accurate reference signal to PIX Connect software, the camera uncertainties can be reduced resulting from device adjustment, ambient temperature drift and short term stability down to a system accuracy of ± 0.5 °C with a confidence interval of 95 %.

The real ability of an IR camera based screening system to detect subjects with fever lies more in the ability to discern which external face temperatures, as measured at the tear duct/ Medial Canthus, are significantly higher than those in a given population exposed to similar ambient temperature conditions.

4.4 Deployment of an IR camera for best results

- Use a camera with a spatial resolution of 382 x 288 pixels or better and with a NETD of 80 mK or better.
- Select the right optics using the Optris calculator. Check the Field of View (FOV) and Measurement Field of View (MFOV) which defines the smallest spot size that can be measured accurately.
- Set the emissivity for temperature measurement on human tissue to 0.98.
- Setting the temperature span for maximum contrast on face temperatures (typically from 23 °C to 40 °C) and applying color isotherms to highlight the hottest temperature on the human face makes it easy to see a subject with temperatures outside a normal range.
- The span and isotherm settings are depending on ambient temperature variations, so optimal setting is important. For differential thermography technique, measure ear temperatures of test subjects and set alarms for 1...2 °C above that average temperature making sure to adjust if ambient temperatures change.
- The PIX Connect software can be set to alarm audibly when a temperature inside the area tool exceeds a customer set threshold. This can be combined with automatic snapshots. Customers should set their own alarm threshold based on their degree of sensitivity to false negatives and positives and advice of medical professionals.
- Use the pre-defined layouts that are provided with PIX Connect software for either crowd based or individual screening. The layouts can easily be adapted for local needs if necessary.

- The accuracy of the measurement can be increased to ± 0.5 °C by using the optional BR 20AR ambient reference black body.
- Eyewear and sunglasses are opaque in the 8-14 μm infrared spectral range. Therefore they should be removed before the individual screening. Contact lenses need not be removed as these do not cover the tear duct.

4.5 Influences on external skin temperatures

- Medications including aspirin, acetaminophen/ paracetamol and ibuprofen or other antipyretics will reduce the human core and also skin temperature and make it impossible for screening a fever condition.
- The evaporative cooling effect from perspiration will decrease outside skin temperatures particularly when a subject is positioned below air flow vents. Subjects visibly perspiring will not deliver temperature measurements useful for fever screening with an IR camera or any remote infrared device.
- Vascular dilatation can occur after alcohol consumption increasing skin temperatures.
- High blood pressure, pregnancy and other physical conditions can also result in increased skin temperature.

- Influences from extremes in ambient temperature such as a long walk through a cold parking lot will impact measurements possibly masking a fever and reporting a false negative reading.



It is important to note that temperatures made on the outside of the body (even at the Medial Canthus) will not match core temperatures taken with a traditional oral thermometer.

BR 20AR -MA-E2020-05-A